

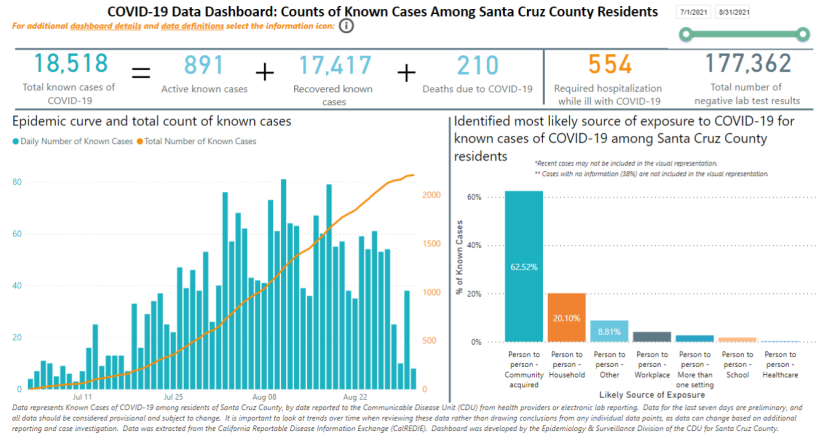
Santa Cruz County Public Health COVID-19 Emergency Response Executive Summary 9/3/2021



COVID-19 Case Trends - Continued Decrease In Cases

The COVID-19 Delta Variant is active in the Santa Cruz County community and throughout the country. Cases in our local community continue to disproportionately impact the 20-34 year old and 35-54 year old ranges.

- **As of 9/1/21, data shows a -1% in average number cases in the last 14 days, compared to 2 weeks ago when it was at +64%. This indicates a significant decrease to the case rate compared to previous weeks.**
- **COVID-19 related hospitalizations and ICU patients increased slightly, while hospital capacity remains impacted by significant healthcare staffing shortages.**
- **The Recent Trends dashboard shows that cases since 7/1/21 are mostly acquired through community transmission, at 62.52%, a drastic change from previous transmission trends.**



Testing

Looking for COVID-19 Testing? Appointments are available at OptumServe, medical providers, and Urgent Care locations.

- Santa Cruz Civic Auditorium site now has a daily capacity of 594 tests.
- Watsonville Ramsay Park site now has a daily capacity of 396 tests.
- Appointments are required and available at no-cost for both OptumServe locations; appointments for children welcome.
- **COMING SOON!** OptumServe testing site approved for the San Lorenzo Valley. A mobile testing bus will be positioned at various predetermined locations, beginning 9/10/2021.

[HSA COVID-19 Testing Resources & Site Locations](#)

Vaccinations

Public Health Division continues to support weekly vaccination pop-up clinics. [HSA COVID-19 Vaccine Resources & Data](#) available here.



Upcoming Pop-Up Clinics

- **September 7th & 10th** - Santa Cruz Main Courthouse | 8am-12pm
- **September 10th** - Food Industry Clinic at the Food Lounge | 12:30-3:30pm

Additional clinics and clinic details can be found at the [COVID-19 Vaccine Pop-Up Calendar](#).



Testing Announcement

There is currently a high demand for BinaxNow antigen testing kits. The State and County are experiencing a shortage and requests for additional kits have been made. Public COVID-19 Testing is still available at the OptumServe testing sites.



CDPH School Guidance

Listed below is school guidance by the California Department of Public Health. These links provide recommendations and requirements for school-based extracurricular activities (including youth sports). They include further clarified/modified quarantine recommendations.

- [K-12 Guidance for 2021-2022 School Year](#)
 - [K-12 Q&A](#): Added Q&A on school-based extracurricular activities
- [Masking Q&A](#): Added Q&A on sports and recreational activities for all ages

Public Health Reminders

- Community spread of COVID-19 is occurring, being exposed or testing positive to COVID-19 can happen.
- Let's come together to support our community and reduce the stigma of COVID-19.
- Remember to breathe and give yourself breaks through these hard times.